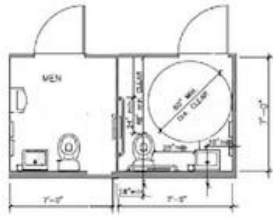


Two Stall Lavatory Building Your Way



ADA Compliant Lavatory Buildings
 Exterior Plumbing Upgrade Not Shown
Base Price is by quote plus Freight

Two Stall 1" Walls Lavatory Building

Interior Stalls Dimension: ADA 7' x 7' x 90" or 5' x 7' x 90"
 Exterior Lavatory Dimensions: 12' 2" x 7' x 91"

Standard Specifications

Ceramic Fixtures – 9 Second Mixer Water Faucet – Mixer Faucet (with Hot Water Option) – Electricity – Exhaust Fan – Safety Light – Smoke Detector – Paper Towel Dispenser – 9" Toilet Paper Dispenser – Foaming Hand Soap Dispenser - Laminate or Vinyl Flooring – Clothes Hooks – Inside Privacy Lock – Outside Keyed Door Lock – 1" Graffiti Resistant Walls – Motion Sensor for Safety Light and Exhaust Fan – Mirror – Wastebasket – Aluminum Encapsulated Wall Edges – Supply of Consumables - 36" Wide Door With Four Hinges

ADA Stall Features

2 Grab Bars – ADA Toilet Seat – Paddle Handled Indicator Door Handle – Paddle Handled Water Faucets – Dual Safety Mirrors – ADA Sink - 6' Wheelchair Radius



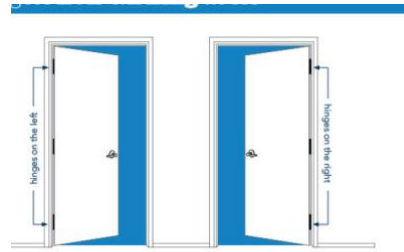
Options:

Baseboard Heater - Tankless Water Heater – No Flush Urinal – Automatic Hand Dryer - Aluminum Runners - Water Pressure Pump – Water or Waste Holding Tank – Air Conditioning – 4" Steel Base With Encapsulated Tine Ports - Upgraded Electrical Service

Two Stall Lavatory Building

Exterior Plumbing upgrade Not Shown

Door Orientation is Optional and Requires Advanced Notice.
Doors are assumed to be left hand doors unless otherwise ordered.



- | LEFT HAND DOOR | RIGHT HAND DOOR |
|---------------------------------|----------------------------------|
| • Hinges located on the left | • Hinges located on the right |
| • Lever pointed left, to hinges | • Lever pointed right, to hinges |
| • Pair with left handed levers | • Pair with right handed levers |



4" Steel Non-Removable Frame Upgrade

Handicap Toilet Stall Drawings

