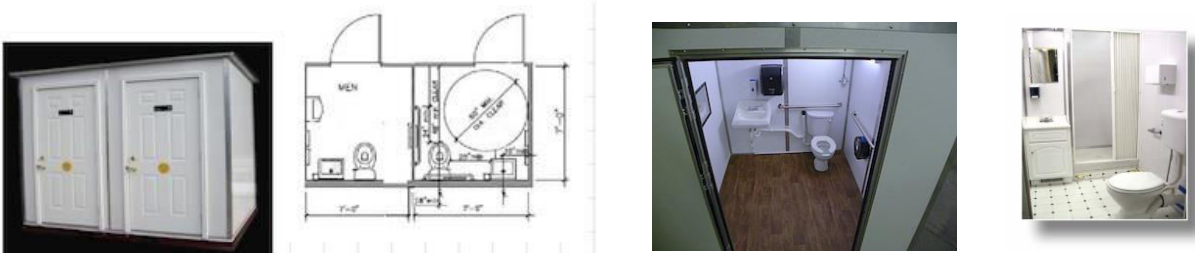


# Two Stall Lavatory Building Your Way

Patents Issued and Pending



ADA Compliant Ground Level Lavatory Buildings  
*Exterior Plumbing Upgrade Not Shown*  
**Base Price is \$22,860 plus Freight**

## Two Stall 1" Walls Lavatory Building

Interior Stalls Dimension: 7' x 7' x 90" or 5' x 7' x 90"  
Exterior Lavatory Dimensions: 12' 2" x 7' x 91"

### Standard Specifications

Ceramic Fixtures – 9 Second Mixer Water Faucet – Mixer Faucet (with Hot Water Option) – Electricity – Exhaust Fan – Safety Light – Smoke Detector – Paper Towel Dispenser – 9" Toilet Paper Dispenser – Foaming Hand Soap Dispenser - Laminate or Vinyl Flooring – Clothes Hooks – Inside Privacy Lock – Outside Keyed Door Lock – 1" Graffiti Resistant Walls – Light Switch for Safety Light and Exhaust Fan – Mirror – Wastebasket – Encapsulated Wall Edges - Consumables - 36" Door with Four Hinges

### ADA Stall Features

2 Grab Bars – ADA Toilet Seat – Paddle Handled Door Handle – Paddle Handled Water Faucets – Dual Safety Mirrors - ADA Sink and Grid



### Options:

Baseboard Heater - Tankless Water Heater – Waterless Urinal – Automatic Hand Dryer - Aluminum Runners - Motion Sensor Light Switch - Water Pressure Pump – Water or Waste Holding Tank – Air Conditioning – Aluminum Base - Upgraded Electrical Service

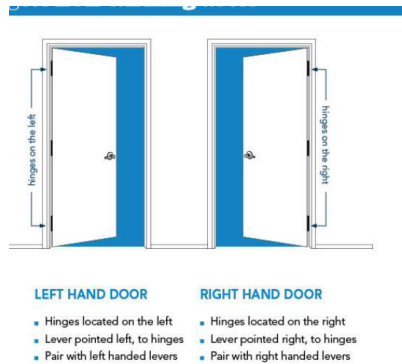
## Comfort Station Upgrades



Touch-less Toilet Cistern – Touch-less Faucet – Touch-less Foaming Soap Dispenser – Door Handle Indicator – Encapsulated Exhaust Fan – Heated Water Hose – Connector Hot Box – Encapsulated Water and Waste Tanks – Unique Comfort Station Fixtures

## Two Stall Ground Level Lavatory Building *Exterior Plumbing upgrade Not Shown*

Door Orientation is Optional and Requires Advanced Notice.  
Doors are assumed to be left hand doors unless otherwise ordered.



## 4" Steel Non-Removable Frame Upgrade